

Address

390 West Bay Road, KY1-1203 George Town,
Grand Cayman, Cayman Islands,

Contact

+1 345 949 3521

info@bhhs caymanislands.com



PADDINGTON PLACE

District: George Town, Cayman Islands

MLS# 416009

Status: Current

Price: US\$25,000,000

Type: Commercial

Year Built: 1992



WHITEHALL HOUSE - PRIME COMMERCIAL BUILDING

District: George Town, Cayman Islands

MLS# 417319

Status: Current

Price: US\$17,500,000

Type: Commercial

Year Built: 1997



ROYAL PLAZA GEORGE TOWN COMMERCIAL

District: George Town, Cayman Islands

MLS# 418016

Status: Current

Price: US\$9,995,000

Type: Commercial

Year Built: 1972



NORTH CHURCH ST PRIME DEVELOPMENT SITE

District: George Town, Cayman Islands

MLS# 418263

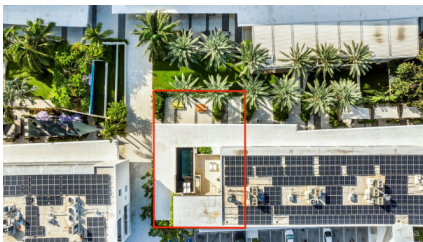
Width: 240

Status: Current

Price: US\$5,300,000

Type: Land

Depth: 540



THE GROVE - UNITS 5 & 6

District: West Bay, Cayman Islands

MLS# 418316

Status: Current

Price: US\$4,500,000

Type: Commercial

Year Built: 2021



PRIME COMMERCIAL DEVELOPMENT LAND GEORGE TOWN ELGIN AVENUE

District: George Town, Cayman Islands

MLS# 416864

Width: 325

Status: Pending/Conditional

Price: US\$4,500,000

Type: Land

Depth: 125

Year Built: 1



HOSPITAL ROAD 0.72 ACRES, COMMERCIAL LAND

District: George Town, Cayman Islands

Price: CI\$3,750,000

MLS# 415506

Type: Land

Width: 272

Depth: 286

Status: Current



AIRPORT INDUSTRIAL PARK CANAL

District: George Town, Cayman Islands

Price: US\$2,665,000

MLS# 412864

Type: Land

Width: 135

Depth: 150

Status: Current



GKF WAREHOUSES - 4 WAREHOUSE UNITS FOR SALE

District: George Town, Cayman Islands

Price: CI\$2,650,000

MLS# 417167

Type: Commercial

Status: Current

Year Built: 1998



WATERFRONT DEVELOPMENT OPPORTUNITY

District: West Bay, Cayman Islands

Price: US\$2,500,000

MLS# 416594

Type: Land

Width: 116

Depth: 393

Status: Current