

**Address**

390 West Bay Road, KY1-1203 George Town,  
Grand Cayman, Cayman Islands,

**Contact**

+1 345 949 3521  
info@bhhs Cayman Islands.com

---

**THE SHOPS AT BUTTONWOOD - RETAIL**

Linford Pierson Highway, George Town, Cayman Islands

**PROPERTY DETAILS**

---

Price: US\$730,550	MLS#: 417986	Type: Commercial
Listing Type: Retail	Status: Pending/Conditional	Bedrooms: -
Bathrooms: -	Built: 2025	Acreage: 1.236
Sq. Ft.: 769		

**PROPERTY DESCRIPTION**

---

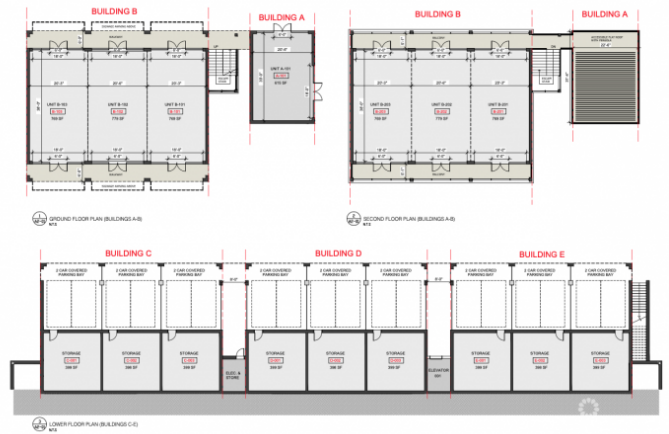
Imagine a small community in close proximity to George Town, the airport and Camana Bay. One where children have room to roam, mom can meet friends for coffee and kids can walk to school, participate with others in sports, tutor sessions, supervised playtime, and so much more. Buttonwood Park is envisioned to be all of the above and so much more. The new Island Primary School serves as the heart of the neighborhood, will educate up to 350 children in grades K-6. In 2025 the new private high school will have the capacity for 250 students in grades 7-11. All the makings for an idyllic neighborhood. The community will also feature a commercial centre, up to 42 residences, nature park, and sports fields. The Development team and Corcoran Cayman Islands has teamed with Evolving Island to develop the 28,000 SF commercial centre and in the future, phase a residential enclave of up to 42 homes. This development will be ideal for young families and professionals desirous of home ownership in Grand Cayman in a truly unique neighborhood where kids can actually walk to school, participate in tutoring classes and have access to a number of after-school programmes, all within a short distance of their home. We are placemakers, believing that every space we sell should accentuate the neighborhood and families who call this "home". Only a few select entrepreneurs will be able to seize this unique opportunity. Hopefully, our list of merchants and service providers will spark an interest in your plans for the future.

**PROPERTY FEATURES**

---

Views	Garden View
Block	20E
Parcel	87H1B103
Foundation	Slab
Zoning	Commercial Neighbourhood
Furnished	No
Road Frontage	250

IMAGES



CIREBA MLS LDX feed courtesy of CORCORAN CAYMAN ISLANDS

**\*Disclaimer:** The information contained herein has been furnished by the owner(s) and or their nominee and represented by them to be accurate. The listing company, agent and CIREBA MLS disclaims any liability or responsibility for any inaccuracies, errors or omissions in the represented information. The listing details herein are also courtesy of CIREBA (Cayman Islands Real Estate Brokers Association) MLS and/or via LDX (Listing Data Exchange) feed. All the information contained herein is subject to errors, omissions, price changes, prior sale or withdrawal, without notice and is at all times subject to verification by the purchaser(s).