

Address

390 West Bay Road, KY1-1203 George Town,
Grand Cayman, Cayman Islands,

Contact

+1 345 949 3521
info@bhhs Cayman Islands.com

IMMACULATE 2-BEDROOM CONDO IN FALCON CLOSE

West Bay, Cayman Islands

PROPERTY DETAILS

Price: CI\$415,000

MLS#: 418278

Type: Residential

Listing Type: Condominium

Status: Back On The Market
Bedrooms: 2

Bathrooms: 2.5

Built: 2013

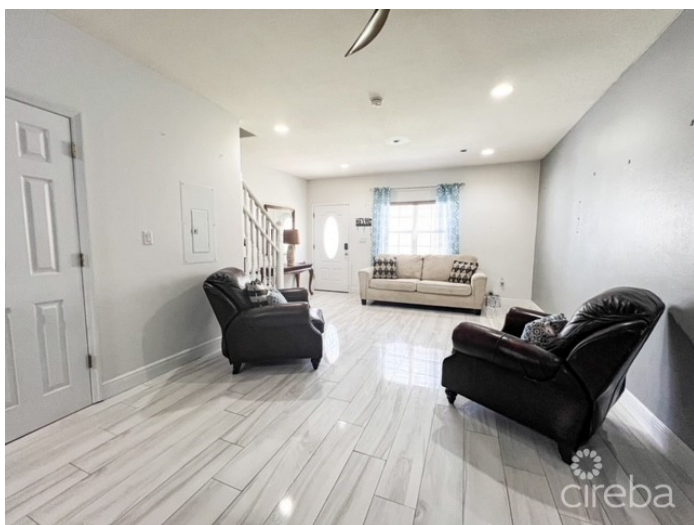
Sq. Ft.: 1174

PROPERTY DESCRIPTION

Welcome to this beautifully renovated 2-bedroom condo in the heart of West Bay. Spanning over 1,100 square feet, this fully furnished unit offers a modern, turnkey experience. The open floor plan features a stylish kitchen with stainless steel appliances, while the spacious living area extends to a screened-in back porch. Both bedrooms are generously sized with ample closet space, and ensuite bathrooms for privacy. Located just minutes from the beach, this condo offers the perfect balance of convenience and tranquility. Supermarkets, restaurants, and shopping centers are all less than a 10-minute drive away. Ideal for those looking for a low-maintenance lifestyle or a great rental investment, this condo combines modern comfort with prime West Bay location.

PROPERTY FEATURES

Views	Garden View
Den	No
Block	4B
Parcel	704H6
Foundation	Slab
Garage	No
Den	No
Furnished	Yes
Floor Level	1



CIREBA MLS LDX feed courtesy of CENTURY 21 THOMPSON REALTY

***Disclaimer:** The information contained herein has been furnished by the owner(s) and or their nominee and represented by them to be accurate. The listing company, agent and CIREBA MLS disclaims any liability or responsibility for any inaccuracies, errors or omissions in the represented information. The listing details herein are also courtesy of CIREBA (Cayman Islands Real Estate Brokers Association) MLS and/or via LDX (Listing Data Exchange) feed. All the information contained herein is subject to errors, omissions, price changes, prior sale or withdrawal, without notice and is at all times subject to verification by the purchaser(s).