

**Address**

390 West Bay Road, KY1-1203 George Town,  
Grand Cayman, Cayman Islands,

**Contact**

+1 345 949 3521  
info@bhhs Cayman Islands.com

---

## NATURE WALK LOT 3

Rum Point, Cayman Islands

### PROPERTY DETAILS

---

Price: CI\$138,000	MLS#: 418765	Type: Land
Listing Type: Low Density Residential	Status: New	Width: 80
Depth: 100	Built: 0	Acres: 0.234

### PROPERTY DESCRIPTION

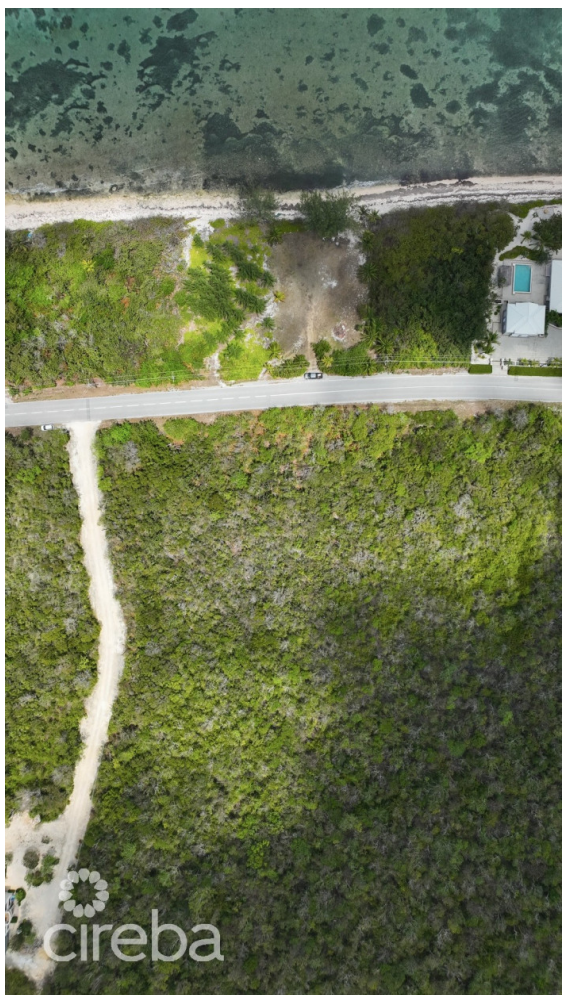
---

Versatile .23-Acre Lot on Queen's Highway Residential & Agricultural Land Near Wyndham Resort This .23-acre inland lot, located along Queen's Highway, offers a prime opportunity for residential or agricultural development. Just past the Wyndham Resort, this parcel provides a versatile investment for those seeking a private home, small farm, or sustainable living space in a peaceful yet accessible location. Strategic Location & Development Potential Situated along one of Grand Cayman's major roadways, this lot ensures easy access to nearby amenities while maintaining privacy and open space. The inland position offers protection from coastal elements, making it a secure choice for long-term development. Whether you envision a tranquil home surrounded by lush greenery or a small-scale agricultural project, this land provides the flexibility to bring your vision to life. Its proximity to resorts, beaches, and shopping adds further appeal for those looking to balance seclusion with convenience. Property Highlights: Size: .23 acres (approx. 10,225 sq. ft.) Zoning: Residential & Agricultural Location: Inland, along Queen's Highway Accessibility: Minutes from Silver Reef Redicencies, beaches, and essential services Development Options: Ideal for a home, small farm, or investment property Endless Possibilities Await With its prime location and flexible zoning, this lot is a rare investment opportunity in one of Grand Cayman's sought-after areas. Whether you're looking to build a private residence, start an agricultural venture, or hold for future growth, this inland lot is an excellent choice. Contact us today to learn more about this unique property and take the next step in designing your future. • Title: Versatile .30-Acre Lot on Queen's Highway - Residential & Agricultural • Discover a .30-acre inland lot on Queen's Highway, zoned for residential & agricultural use. Ideal for development near Wyndham Resort. Contact us today! • Keyphrase: Inland lot on Q... [View More](#)

### PROPERTY FEATURES

---

Views	Garden View
Block	61A
Parcel	47H3
Zoning	Agriculture/Residential



---

CIREBA MLS LDX feed courtesy of WILLIAMS2 REAL ESTATE

**\*Disclaimer:** The information contained herein has been furnished by the owner(s) and or their nominee and represented by them to be accurate. The listing company, agent and CIREBA MLS disclaims any liability or responsibility for any inaccuracies, errors or omissions in the represented information. The listing details herein are also courtesy of CIREBA (Cayman Islands Real Estate Brokers Association) MLS and/or via LDX (Listing Data Exchange) feed. All the information contained herein is subject to errors, omissions, price changes, prior sale or withdrawal, without notice and is at all times subject to verification by the purchaser(s).