

## SELWORTHY GROVE 0.29 ACRES, CAYMAN BRAC

Cayman Brac East, Cayman Islands

### PROPERTY DETAILS

Price: CI\$65,000

MLS#: 418841

Type: Land

Listing Type: Low Density Residential

Status: New

Width: 96.55

Depth: 147.77

Built: 0

Acres: 0.2889

### PROPERTY DESCRIPTION

Located in the tranquil Cayman Brac East, Cayman Brac Land Parcel 249 at Selworthy Grove offers a .2889-acre plot perfect for building your ideal island retreat. Surrounded by nature and offering a peaceful setting, this property is well-suited for a spacious family home, a relaxing vacation escape, or a long-term investment. Selworthy Grove is known for its serene atmosphere and lush surroundings, making it an excellent choice for those seeking privacy and a connection to nature. With plenty of space to design a home that complements the environment, this parcel provides a wonderful opportunity to own a piece of paradise in Cayman Brac.

### PROPERTY FEATURES

Views

Garden View

Block

110A

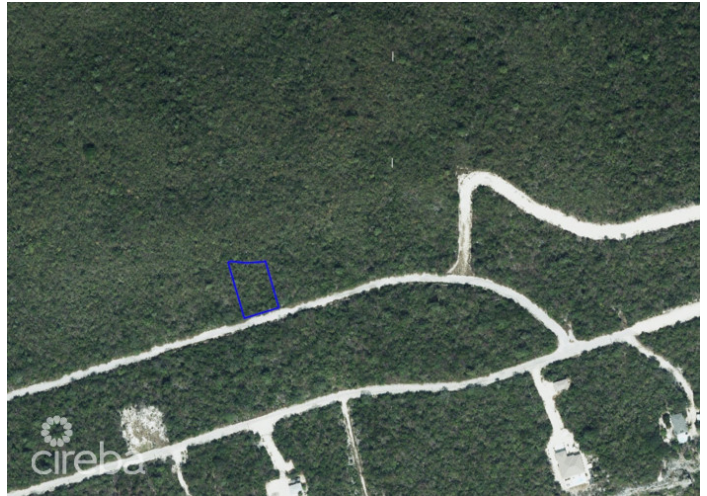
Parcel

249

Road Frontage

93.7

### IMAGES



---

CIREBA MLS LDX feed courtesy of PROPERTY CAYMAN LTD

**\*Disclaimer:** The information contained herein has been furnished by the owner(s) and or their nominee and represented by them to be accurate. The listing company, agent and CIREBA MLS disclaims any liability or responsibility for any inaccuracies, errors or omissions in the represented information. The listing details herein are also courtesy of CIREBA (Cayman Islands Real Estate Brokers Association) MLS and/or via LDX (Listing Data Exchange) feed. All the information contained herein is subject to errors, omissions, price changes, prior sale or withdrawal, without notice and is at all times subject to verification by the purchaser(s).