

## THE RIDGE, SPOTTS, LOT 6

Spotts, Cayman Islands

### PROPERTY DETAILS

Price: CI\$359,625	MLS#: 418949	Type: Land
Listing Type: Low Density Residential	Status: Current	Width: 100.9
Depth: 101.9	Built: 0	Acres: 0.23

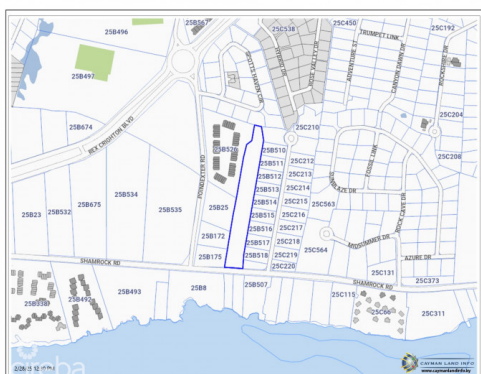
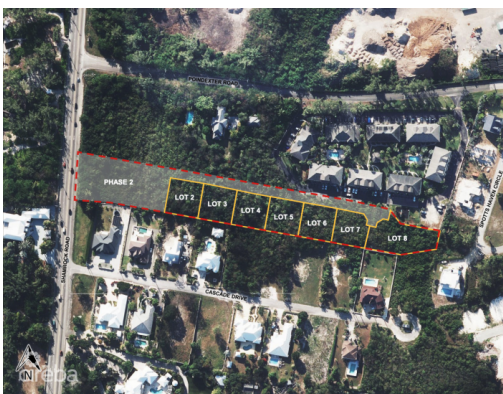
### PROPERTY DESCRIPTION

The Ridge, Lot 6 - Elevated Coastal Living in Grand Cayman Williams2 Real Estate proudly presents The Ridge, Lot 6, an exceptional opportunity to build your dream home in one of Grand Cayman's most sought-after new communities. Nestled along the scenic coastline in Spotts, this exclusive subdivision offers an unbeatable combination of high elevation, serene natural beauty, and modern island conveniences. Premium Location & Unmatched Elevation Perched high above sea level, The Ridge is a newly developed subdivision designed for those who value tranquility without sacrificing convenience. This exclusive community features seven spacious land lots and 12 luxury apartments, creating an intimate yet vibrant residential community. A Community Designed for Island Living • The Ridge, Lot 6, offers ample space to design your dream home, which will capture the beauty of the Caribbean while maximizing privacy and comfort. • Strategically located in Spotts, Off Shamrock Road, The Ridge ensures seamless access to essential amenities, top schools, shopping centers, and the island's best dining. • Enjoy the convenience of George Town's bustling business district, just a short drive away, while retreating to your serene, elevated sanctuary at the end of the day. Why Choose The Ridge, Lot 6? -Peaceful yet well-connected community -Near Spotts Beach—one of the island's best spots for turtle-watching -Modern infrastructure & premium neighborhood design -Proximity to top schools, restaurants, and shopping - Exclusive subdivision with limited availability Your Opportunity to Build in Prime Cayman Islands Real Estate The Ridge offers a rare chance to secure a land lot in an exclusive, high-elevation community. Whether you're looking to build a modern island retreat, a family home, or an investment property, Lot 6 is the perfect foundation for your vision. Don't miss out on this limited opportunity! Contact us today to learn more about The Ridge, Lo... [View More](#)

### PROPERTY FEATURES

Views	Inland
Block	25B
Parcel	678LOT6
Zoning	Low Density residential
Road Frontage	100.9

### IMAGES



---

CIREBA MLS LDX feed courtesy of WILLIAMS2 REAL ESTATE

**\*Disclaimer:** The information contained herein has been furnished by the owner(s) and or their nominee and represented by them to be accurate. The listing company, agent and CIREBA MLS disclaims any liability or responsibility for any inaccuracies, errors or omissions in the represented information. The listing details herein are also courtesy of CIREBA (Cayman Islands Real Estate Brokers Association) MLS and/or via LDX (Listing Data Exchange) feed. All the information contained herein is subject to errors, omissions, price changes, prior sale or withdrawal, without notice and is at all times subject to verification by the purchaser(s).